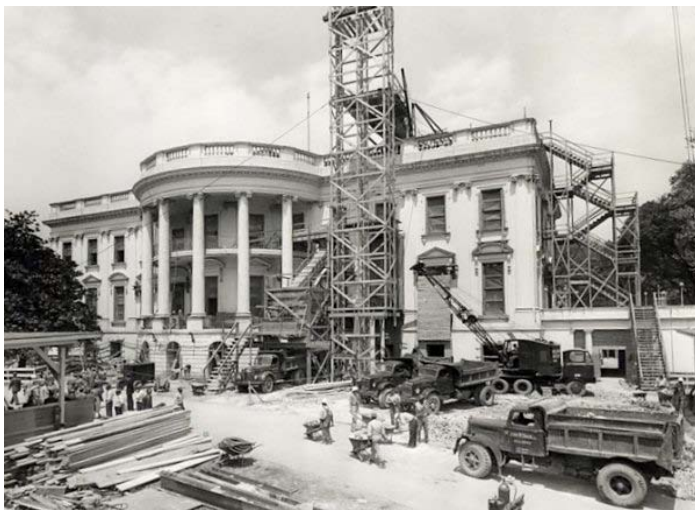


#348 The White House in Prophecy – Why the White House was expanded to 132 rooms during the Presidency of Harry Truman

Key Understanding: Why the White House was expanded to 132 rooms during the presidency of Harry Truman. The White House was expanded to 132 rooms during the presidency of Harry S. Truman. Prophetically, it was expanded to 132 rooms during Truman’s time in the White House because Truman’s dropping of the atomic bombs on August 6 and August 9, 1945, was a significant part of the Dragon giving America its Revelation 13:2 power, seat, and authority, as well as being a part of Revelation 13:4, ‘Who can make war with the Beast?’ Thus, the President (Harry Truman) who dropped the atomic bombs that gave America its most significant leap to superpower status, in fulfillment of Revelation 13:2, is the same President who was in office when the White House – the official site of the literal power, seat, and authority of the President – was expanded to 132 rooms.



Harry Truman



The South Face in 1950 during reconstruction



White House reconstruction, 1948-1952

Revelation 13:2 (KJV) And THE BEAST [out of the Sea] WHICH I SAW WAS LIKE UNTO A LEOPARD, and HIS FEET WERE AS THE FEET OF A BEAR, and HIS MOUTH AS THE MOUTH OF A LION: and THE [Great Red] DRAGON [Satan] GAVE HIM [the Beast out of the Sea] HIS POWER, AND HIS SEAT, AND GREAT AUTHORITY. [The Beast’s power, seat, and authority ultimately and symbolically reside at the 132-room White House, expanded to 132 rooms during the presidency of Harry Truman.]

Revelation 13:3 (KJV) And I SAW ONE OF HIS HEADS [the 7th Head or Kingdom, Germany’s Third Reich] AS IT WERE WOUNDED TO DEATH [by the 8th Kingdom, the Beast, partially reflected through Hitler’s April 30, 1945, self-inflicted head wound, and fully

fulfilled through the events of the German surrender on May 7-8, 1945]; **AND HIS** [the 8th Kingdom's, the Beast's, **the Dragon's 8th Head's**] **DEADLY WOUND** [at Pearl Harbor, December 7, 1941, partially symbolized through the ruin of *Husband Kimmel, Head* of the U.S. Navy's Pacific Fleet at Pearl Harbor] **WAS HEALED** [through the defeat of Germany, and then through the August 6th Hiroshima and August 9th Nagasaki atomic bombs defeat of Japan]: **and all the world wondered after THE BEAST [the 8th Head of the Dragon].**

Revelation 13:4 (KJV) And they worshipped the dragon which gave power unto the beast: and they worshipped the beast, saying, Who is like unto the beast? WHO IS ABLE TO MAKE WAR WITH HIM? [The Beast's August 6th U-238 Hiroshima and August 9th Pu-239 Nagasaki atomic bombs, dropped during the presidency of Harry Truman, stimulate the Revelation 13:4 question, 'Who is able to make war with the Beast?']

*Why there are
132 rooms
in the White House*

**Revelation 13:2
THE [Great Red]
DRAGON [Satan] GAVE
HIM [the Beast out of the
Sea] HIS POWER, AND
HIS SEAT, AND GREAT
AUTHORITY.**



Here is #348–Doc 1, a source among several sources which says that the White House was expanded from 125 to 132 rooms during the 1948-1952 Truman Renovation of the White House.

[Click here](#) for #348–Doc 1

[Click here](#) for the Original Source of #348–Doc 1

[<< Previous](#)

[Main Page and List of Unsealing Summaries](#)

[Next >>](#)