

#1853 The Yom Kippur War and the Abomination of Desolation – The post-World War II U.S. waxing great toward the South and toward the East as a *second* Syria/Antiochus IV Epiphanes, part 112, *The Thatcher Hurricanes of 1635 and 1938 and 1989: Hurricane Hugo as a Thatcher Hurricane of September 21-22, 1989*



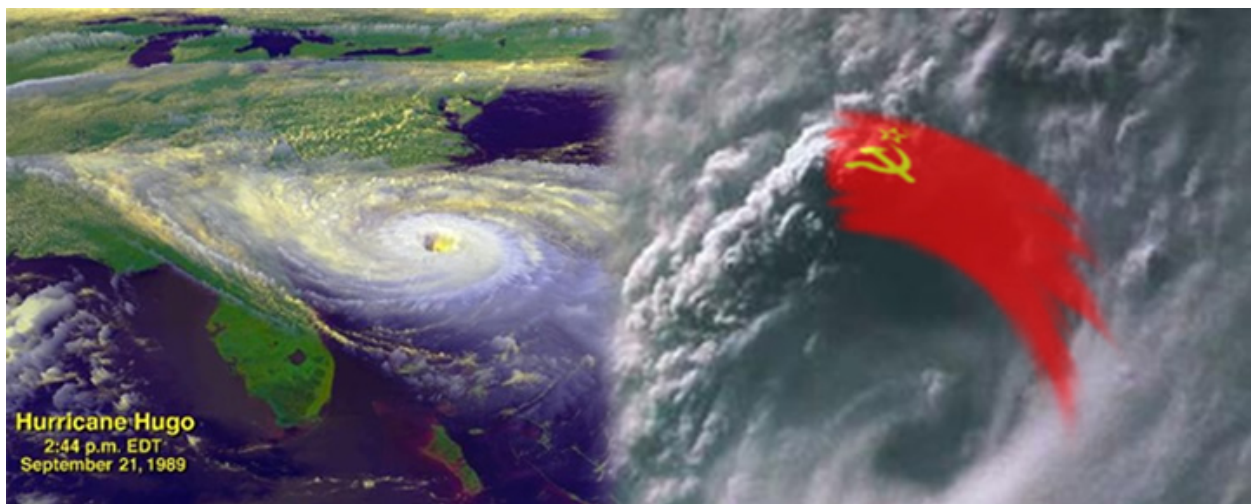
The core of this message concerning Hurricane Hugo of September 21-22, 1989, being a *Thatcher* hurricane goes back to Unsealing #1846, and the fact that Hurricane Hugo of September 21-22, 1989, was also a *Church-ill* hurricane, just as the hurricanes of 1635 and 1938 were *Church-ill* hurricanes.



Review (from the Key Understandings of Unsealing #1846): *The Church-ill hurricanes of 1635 and 1938 and 1989.*

Remember the Triple 7th Kingdoms of

Great Britain, Germany, and the Soviet Union? [Reference Unsealing #400.] The three Church-ill hurricanes of (1) the Great Colonial Hurricane of August 15, 1635, (2) the Great New England Hurricane of September 21-22, 1938, and **(3) Hurricane Hugo of September 21-22, 1989**, essentially prophetically reflect the victorious wind of “the people” of the United States defeating (i) Great Britain in the Revolutionary War (remember, the Mathers represented *the voice/will of the people* in specific attachment to England’s Glorious Revolution of 1688 and the 1689 English Bill of Rights, predecessors of the American Revolution of 1776 and the 1791 American Bill of Rights [reference Unsealings #602–#621]), (ii) Nazi Germany in World War II, and **(iii) the Soviet Union in the Cold War**, respectively. [Reference Unsealings #1787 and #1801.] However, the same strong winds that carried “the people” to victory also carried away the Church-ill of Jesus Christ, because the ‘victory of the people’ foundation of the Church-ill reveals it to be a House of God built upon the sand, not on *the* Rock.



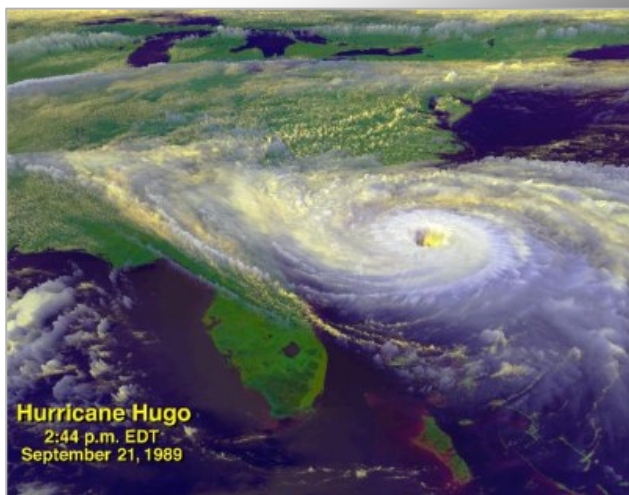


Key Understanding: *The ‘Thatcher-Church-ill’ hurricane of September 21-22, 1989. Hurricane Hugo making landfall at Charleston, South Carolina, on September 21, 1989, represented a wind carrying away the Soviet Union at the time of the end. As a solid political partner of U.S. President Ronald Reagan, British Prime Minister Margaret Thatcher was such a strong figure in the political demise of the Soviet Union that if the ‘Church-ill’ Hurricane Hugo of September 21-22, 1989, is connected with Irving Berlin and Ronald Reagan (as was shown in Unsealing #1846), then it is also connected with Margaret Thatcher and appropriately becomes the ‘Thatcher-Church-ill’ Hurricane Hugo of September 21-22, 1989.*

*Daniel 8:23-24 (NIV) “In **THE LATTER PART OF THEIR REIGN**, when rebels have become completely wicked, **A [primary] STERN-FACED KING** [represented by Irving Berlin and Woodrow Wilson in World War I, Irving Berlin and Winston Churchill/Roosevelt/Truman in World War II, and **Irving Berlin and U.S. President Ronald Reagan/British Prime Minister Margaret Thatcher, a ‘second Churchill,’ in the Cold War**], a master of intrigue, will arise.*

*24 He will become very strong, but not by his own power. He will cause astounding devastation and will succeed in whatever he does. **HE WILL DESTROY THE MIGHTY MEN AND THE HOLY PEOPLE.***

On June 12, 1987, at the Brandenburg Gate in Berlin, U.S. President Ronald Reagan exhorted Soviet leader Mikhail Gorbachev to “tear down this [the Berlin] wall.” [Reference Unsealing #1759.] The September 22, 1989, death of Irving Berlin and Hurricane Hugo on September 21-22, 1989, were prophetically linked to the November 9-11, 1989, fall of the Berlin Wall, all signaling the end of the Cold War.



<< [Previous](#)

[Main Page and List of Unsealing Summaries](#)

[Next](#) >>